

# Dual T1/PRI



## Release Notes

Part No. 1.024.2188-00  
Version Number 3.1.5





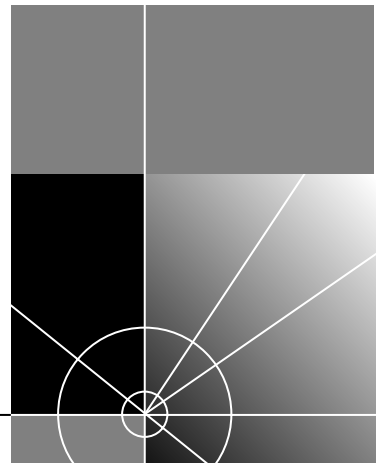
# Dual T1/PRI

## Release Notes Version Number 3.1.5

<http://www.3com.com/>

Part No. 1.024.2188-00

---



**3Com Corporation**  
**5400 Bayfront Plaza**  
**Santa Clara, California**  
**95052-8145**

Copyright © 1999, 3Com Corporation. All rights reserved. No part of this documentation may be reproduced in any form or by any means or used to make any derivative work (such as translation, transformation, or adaptation) without written permission from 3Com Corporation.

3Com Corporation reserves the right to revise this documentation and to make changes in content from time to time without obligation on the part of 3Com Corporation to provide notification of such revision or change.

3Com Corporation provides this documentation without warranty of any kind, either implied or expressed, including, but not limited to, the implied warranties of merchantability and fitness for a particular purpose. 3Com may make improvements or changes in the product(s) and/or the program(s) described in this documentation at any time.

#### **UNITED STATES GOVERNMENT LEGENDS:**

If you are a United States government agency, then this documentation and the software described herein are provided to you subject to the following:

**United States Government Legend:** All technical data and computer software is commercial in nature and developed solely at private expense. Software is delivered as Commercial Computer Software as defined in DFARS 252.227-7014 (June 1995) or as a commercial item as defined in FAR 2.101(a) and as such is provided with only such rights as are provided in 3Com's standard commercial license for the Software. Technical data is provided with limited rights only as provided in DFAR 252.227-7015 (Nov 1995) or FAR 52.227-14 (June 1987), whichever is applicable. You agree not to remove or deface any portion of any legend provided on any licensed program or documentation contained in, or delivered to you in conjunction with, this User Guide.

Unless otherwise indicated, 3Com registered trademarks are registered in the United States and may or may not be registered in other countries.

3Com and the 3Com logo are registered trademarks of 3Com Corporation. 3ComFacts is a service mark of 3Com Corporation.

Other brand and product names may be registered trademarks or trademarks of their respective holders.

#### **YEAR 2000 INFORMATION:**

For information on Year 2000 compliance and 3Com products, visit the 3Com Year 2000 web page:

*<http://www.3Com.com/products/jr2000.html>*

# CONTENTS

About These Release Notes.....	1
Software Compatibility .....	1
New Features.....	2
Installing the New Software .....	2
Software Download from the DOS prompt .....	2
Preparing for a Software Download.....	2
Installing SDL on a Management Station .....	3
Important Information about SDL files .....	3
Starting the DOS Software Download.....	3
About the PCSDL Command Syntax .....	3
Extracting Syntax Information from the Filename.....	4
Sample PCSDL Command .....	5
Software Download through Total Control Manager .....	5
Connect to the NMC.....	5
Temporarily Copy the Software onto the Management Station .....	5
Checking the Software Version.....	5
Start the Software Download .....	6
About the Software Download Window.....	7
Trouble Clearing the Software Download.....	8
What Happens During a Download? .....	8
"Device Not Responding" Error Message.....	8
Restoring the Previous Software.....	8
Resolved Issues .....	8
Unresolved Issues.....	9



# DUAL T1/PRI RELEASE NOTES

---

## About These Release Notes

These Release Notes contain information important to the installation and configuration of the Dual T1/PRI Version 3.1.5 release including:

- Product compatibility
- New features
- How to perform a software download
- Resolved Issues
- Unresolved Issues

Use these Release Notes in conjunction with the *Dual T1/PRI NAC Product Reference* and *Dual T1 DS-1 NIC Getting Started Guide*.

---

## Software Compatibility

Dual T1/PRI Version 3.1.5 is compatible with these Total Control products:

Product	Software Version
HiPer DSP	2.0.19
Quad Double Sided Modem	6.0.6
Quad Single Sided Modem	6.1.6
NETServer	3.8.1
NETServer Manager	3.4.2
HiPer ARC	4.1.11
HiPer ARC Manager- Windows	1.1.8
HiPer ARC Manager- Solaris	1.1.9
HiPer ARC Manager- HP	1.1.8
Total Control Manager- Windows	6.0.23
Total Control Manager- Solaris	6.0.20

(continued)

Product	Software Version
Total Control Manager- HP	6.0.20
4MB Network Management Card	6.0.9
8MB and 16MB Network Management Card	6.1.17
HiPer Network Management Card	6.2.17
Security and Accounting- Windows	6.0.8
Security and Accounting- Solaris	6.0.7

---

## New Features

The following features are included in this release:

- RFC-1406 (Definitions of Managed Objects for the DS1 and E1 Interface Types) Error Counters—UAS, CCS, and SEFS
- Increased Number of Modem Pools—from 4 to 12

---

## Installing the New Software

To install this version, obtain the software code from 3Com's TOTALservice website at <http://TOTALservice.3Com.com>. Then, install the software using the following software download (SDL) procedure.

For more information on Total Control Manager, refer to the Total Control Manager online Help system.

## Software Download from the DOS prompt

### Preparing for a Software Download

- 1 Make a backup copy of the disk.
- 2 Verify the cabling between the management station and the T1/PRI.
- 3 Verify the baud rate of your COM port if you are unsure of the current baud rate. Your DIP switch settings must match the baud rate of the COM port. The factory baud rate is 9600 bps.

#### To verify the current baud rate:

- a Connect a management station to the User Interface Port on the back of the T1 NIC.

- b Set your management station communication package to 9600 baud, and press **Enter** a few times. You should see the Main Menu screen scroll by. If you see this, you are ready to begin the SDL. If not, try the next option and set the management station baud rate accordingly.
- c Verify the DIP switch settings if you are unsure of the current switch settings.

Switch 1	Switch 2	Baud rate
OFF	OFF	9600
OFF	ON	19200
ON	OFF	38400
ON	ON	RESERVED

### Installing SDL on a Management Station

- 1 Close all applications before installing the SDL software.
- 2 Copy the SDL files to a directory on the management station.

### Important Information about SDL files

After you copy the SDL files to your hard drive, never change the file names or try to edit the files. This will cause an error message to be displayed when you try to run the Software Download program.

### Starting the DOS Software Download



*Before starting a DOS SDL, unload any terminate-and-stay-resident (TSR) programs. TSRs will greatly slow SDL.*

- 1 Type **CD\USR\_SDL** or **CD\x**, where x is the path of the directory you copied the files to. This will change you to the appropriate directory.
- 2 From the command prompt, type the appropriate PCSDL command syntax. Refer to the following sections for addition information.
- 3 Press **Enter**.

### About the PCSDL Command Syntax

These guidelines apply to the PCSDL command syntax:

- Commands can be in either upper- or lower-case letters.
- Leave one space after each command line parameter.
- The *d* command is optional; the rest is required.

- If you type an invalid parameter, or an insufficient number of required parameters, the software will display online help specifying the correct syntax.
- Type **pcsdl -h** to display the online help.

Type this parameter	To do this:
pcsdl	Initiate the PC SDL program.
-p	Select the communication port on the management station cabled to the card (required). Possible ports: 1,2
-r	Select the serial port rate (required). Possible rates: 9600, 19200, 38400, 57600 bps Possible T1 rates: 2400, 9600, 19200, 38400 bps
-vsd	Specify the software download file version .sdl number (required).
-vna	Specify the software operation code version .nac number (required).
-nsd	Specify the .sdl filename prefix (required).
-nna	Specify the .nac filename prefix (required).
-d	Specify the path name to the .NAC and .SDL files if they are not in the current directory.

### Extracting Syntax Information from the Filename

This table shows an example of how to extract syntax information from the filename.

Filename	Prefix	Version number	File type
dp030105.nac	dp (Dual T1/PRI)	3.1.5 (03 01 05)	.NAC
dp010001.sdl	dp (Dual T1/PRI)	1.0.1 (01 00 01)	.SDL



## Sample PCSDL Command

This sample command shows PCSDL syntax:

```
pcsd1 -p2 -r38400 -vsdl.0.1 -vna3.1.5 -nsddp -nnadp  
-dc:\usr_sdl
```

For this example, notice that:

- **pcsd1** is the executable.
- **-p2** shows that the management station is using COM2 as the serial port.
- **-r38400** shows that the T1 NAC is configured to 38400 bps.
- **-vsdl.0.1** and **-vna3.1.5** are the version numbers for the dp030105.nac and dp010001.sdl files.
- **-dc:\usr\_sdl** shows that the upgrade files are located in the C:\USR\_SDL directory.

## Software Download through Total Control Manager

You can use Total Control Manager to transfer software across a LAN or WAN to a chassis NAC.

### Connect to the NMC

Connect the management station to the NMC NIC through a LAN, WAN, or SLIP connection. Refer to the *NMC Getting Started Guide*. You may also need to configure the NMC SLIP port. Refer to the *NMC Getting Started Guide*.

### Temporarily Copy the Software onto the Management Station

If you are downloading the software from the 3Com website, you need to temporarily copy the files to the management station. If you are using Total Control Manager on the management station, copy the software to C:\USRSUITE\SDL. Otherwise, copy the software to an appropriate temporary directory.

### Checking the Software Version

Follow these steps to check the currently-installed version of software:

- 1 Open Total Control Manager and select the appropriate chassis.
- 2 From the **Configure** menu, click **Programmed Settings**, and then click **Inventory**.
- 3 Check the software version of the appropriate NAC after the inventory is complete.

## Start the Software Download

Complete these steps:



*Before starting a Total Control Manager SDL, unload any terminate-and-stay-resident (TSR) programs. TSRs will greatly slow SDL.*

- 1 Launch the Total Control Manager application.
- 2 Establish a connection with the chassis.
- 3 From the device display on the Total Control Manager console, select the card(s) to which you want to perform the download.



*Once you enter the Software Download window, you may select or deselect cards by their card number.*

- 4 On the **Configure** menu, click **Software Download**. Or, click the **Software Download** icon on the toolbar. Refer to the Total Control Manager online Help system for more information.
- 5 Click **Start** to begin the download.

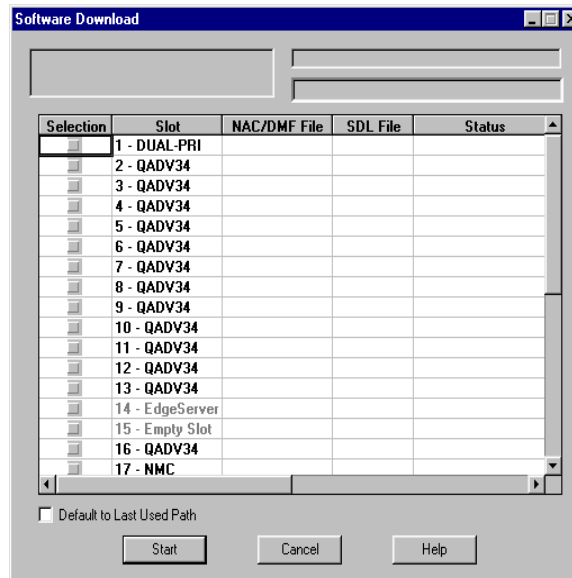
During the download, progress messages are displayed in the upper-left corner of the Software Download window. A "Success" message indicates the download is complete.



*If you selected more than one card to download, and you want to cancel the download before it completes, click **STOP**. The in-progress SDL continues, but the remaining downloads are canceled. Corresponding checkmarks are removed.*

## About the Software Download Window

This is the software download window that you see when completing SDL from Total Control Manager.



Column Name	Function
Selection	Allows you to select multiple cards on which to perform downloads. A checkmark appears for every selected card. The device display also shows a checkmark for each selected card.
Slot	Lists the chassis slot number and card name.
NAC/DMF File	Lists the most current .NAC or .DMF file in the C:\USRSUITE\SDL directory. If the software version is more recent than the NAC itself, the entry appears in red.
SDL File	Lists the most current .SDL file in the C:\USRSUITE\SDL directory. If the software version is more recent than the NAC itself, the entry appears in red.
Status	Lists the status of each software download on a card-by-card basis. Messages include "In Progress" and "Complete".

## Trouble Clearing the Software Download

### What Happens During a Download?

When the SDL program begins, the management station sends an AT command sequence to the appropriate NAC to enable SDL mode. Control then transfers to the software loader. While in SDL mode, the NAC's RN/FL LED flashes green. Once the NAC enters SDL mode, no other code applications can run and the NAC is entirely devoted to performing the SDL.

The SDL program verifies the initialization and operation software, then begins the download. As the program executes, status messages are displayed.

### “Device Not Responding” Error Message

If you receive a “Device Not Responding” error message while trying to download, too much other management traffic may be routing to the chassis. Reduce other operations (including multiple management station access) and try the download again.

## Restoring the Previous Software

To restore the software, reload the previous version of code. Obtain the software code from 3Com's TOTALservice website at <http://TOTALservice.3Com.com>. Then, use the PCSDL utility or Total Control Manager to install the software. Refer to *Installing the New Software* in the previous section.

## Resolved Issues

These issues have been resolved with this release:

MR Number	Description
MR 358	PRI inbound call routing configuration does not work.
MR 368	PRI responds with out of service messages for in service messages received from the telephone company.
MR 389	International dialing from quad modems to 5ESS does not work.
MR 395	Object values <b>uds1StatNfasDChannel</b> and <b>uds1StatDChannel</b> are not reported to the Network Management Card.
MR 397	Not able to busy out all 24 channels through Total Control Manager in Non-Facility-Associated Signaling (NFAS) configurations.

(continued)

MR Number	Description
MR 426	Ability to define more than four Dialed Number Identification Service (DNIS) codes.
MR 464	Non-Facility-Associated Signaling (NFAS) PRI responds with out of service messages for in service messages received from the telephone company.

Unresolved Issues

There are no unresolved issues with this release.





3Com Corporation  
5400 Bayfront Plaza  
P.O. Box 58145  
Santa Clara, CA  
95052-8145

©1999  
3Com Corporation  
All rights reserved  
Printed in the U.S.A.

Part No. 1.024.2188-00